

Harrisburg, PA

100 Pine Street • PO Box 1166
Harrisburg, PA 17108-1166
Tel: 717.232.8000

Lancaster, PA

570 Lausch Lane • Suite 200
Lancaster, PA 17601-3057
Tel: 717.291.1177

Scranton, PA

125 North Washington Ave. • Suite 220
Scranton, PA 18503
Tel: 570.209.7220

State College, PA

330 Innovation Boulevard • Suite 101
State College, PA 16803
Tel: 814.867.8500

York, PA

316 N. George Street
York, PA 17401
Tel: 717.714.6400

Frederick, MD

5283 Corporate Drive • Suite 104
Frederick, MD 21703
Tel: 301.241.2030

Columbus, OH

21 East State Street • 17th Floor
Columbus, OH 43215-4228
Tel: 614.469.8000

Washington, DC

1200 G Street, NW • Suite 800
Washington, DC 20005
Tel: 202.898.5700



The McNees Real Estate Law Group



www.McNeesLaw.com



Real Estate Law

The Real Estate Law Practice Group at McNees Wallace & Nurick delivers sophisticated legal advice to a broad range of clients in virtually all areas of law relating to commercial real estate.

Our clients include residential and commercial real estate developers, investors, and lenders; buyers and sellers of real estate; businesses and non-profit entities, such as colleges and universities, with significant real estate components; and commercial lessors and lessees.

Our experienced real estate lawyers, paralegals, and non-legal professionals, including a land use planner, assist and advise our clients on a broad range of projects, including:

- Commercial real estate development such as shopping centers, freestanding retail stores, restaurants, theaters, office buildings, warehouses, and other industrial projects.
- Wireless telecommunications leases.
- Acquisition and disposition of commercial real estate.
- Coordinating real estate transfers within corporate mergers and acquisitions.
- Commercial leasing, including retail, office, industrial, and mixed-use properties.
- Commercial, residential, and mixed-use condominium and planned community developments, including age-restricted communities, traditional neighborhood developments, and communities involving master associations, as well as shopping center and office condominiums.
- Real estate financing, including commercial mortgages, private debt, sale-leaseback, leasehold financing, and real estate issues that may impact the collateral in a financing transaction.
- Storm water management and transportation matters that arise during the land development approval process.
- Land use analysis and approval, including approval of subdivision and land development plans, and obtaining all forms of zoning relief, including variances, special exceptions, and conditional uses.
- Amendments and challenges to land use ordinances.
- Real estate litigation and alternative dispute resolution, including controversies involving zoning and land development issues, lease disputes, and title challenges.
- Land use issues in eminent domain matters, including challenges to condemnations and determinations of just compensation.
- Local regulations of land use in natural gas development and the energy industry.
- Oil and gas title opinions and issues.
- Sales and leases of mineral rights.
- Real estate tax assessment appeals for commercial and investment property owners.
- Real estate brokerage law.

Our goal is to help our clients achieve their objectives at all stages of their real estate transactions through practical, efficient, and timely representation.

Group members are frequent speakers, writers, and educational presenters on a variety of real property law issues.

The McNees Real Estate Group



JONATHAN D. ANDREWS, CHAIR
717.237.5358
jandrews@mcneeslaw.com



STEPHANIE CARFLEY
717.581.3724
ccarfley@mcneeslaw.com



CHARLES M. COURTNEY
717.237.5296
ccourtney@mcneeslaw.com



SHAUN R. EISENHAUER
717.237.5257
seisenhauer@mcneeslaw.com



DAVID J. EVENHUIS
717.237.5421
devenhuis@mcneeslaw.com



MARIA KENNISON
717.237.5336
mkennison@mcneeslaw.com



STEPHANIE J. SPRENKLE
717.237.5327
ssprenkle@mcneeslaw.com



HELEN L. GEMMILL
717.237.5273
hgemmill@mcneeslaw.com



GIUSEPPINA G. MCCARTHY
717.237.5360
gmccarthy@mcneeslaw.com



MARK STANLEY
717.581.2315
mstanley@mcneeslaw.com



CAROL VERISH HOUCK
717.237.5325
chouck@mcneeslaw.com



JEFFREY ESCH MCCOMBIE
717.237.5310
jmccombie@mcneeslaw.com



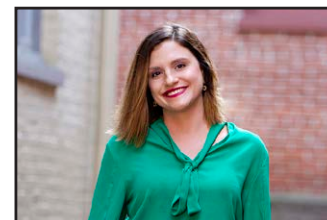
JAMES M. STRONG
717.237.5200
jstrong@mcneeslaw.com



KANDICE K. HULL
717.237.5452
khull@mcneeslaw.com



J. COREY REEDER
814.867.8500
creeder@mcneeslaw.com



CLAUDIA N. SHANK
717.581.3730
cshank@mcneeslaw.com



RHONDA M. WEAVER
717.237.5434
rweaver@mcneeslaw.com



PETER WERTZ
717.581.2314
pwertz@mcneeslaw.com



**CHRIS J. KNARR, AICP, BCO, CZO
SPECIALIST**
717.237.5301
cknarr@mcneeslaw.com



ANNE E. STANKO, PARALEGAL
717.237.5301
astanko@mcneeslaw.com