

**Harrisburg, PA**

100 Pine Street • PO Box 1166  
Harrisburg, PA 17108-1166  
Tel: 717.232.8000

**Lancaster, PA**

570 Lausch Lane • Suite 200  
Lancaster, PA 17601-3057  
Tel: 717.291.1177

**Scranton, PA**

125 North Washington Ave. • Suite 220  
Scranton, PA 18503  
Tel: 570.209.7220

**State College, PA**

330 Innovation Boulevard • Suite 101  
State College, PA 16803  
Tel: 814.867.8500

**York, PA**

316 N. George Street  
York, PA 17401  
Tel: 717.714.6400

**Frederick, MD**

5283 Corporate Drive • Suite 104  
Frederick, MD 21703  
Tel: 301.241.2030

**Columbus, OH**

21 East State Street • 17th Floor  
Columbus, OH 43215-4228  
Tel: 614.469.8000

**Washington, DC**

1200 G Street, NW • Suite 800  
Washington, DC 20005  
Tel: 202.898.5700



**McNees Corporate & Tax Group**



## Firm and Corporate Group Fast Facts

- Over \$1 billion of business transactions closed in each of the last five years
- 38 lawyers recognized in the 2018 edition of *The Best Lawyers in America*<sup>®</sup>
- 15 *PA Super Lawyers*<sup>®</sup> and 6 *Rising Stars* recognized in the Super Lawyers Business Edition
- Ranked Tier 1 firm in 2017 “Best Law Firms” by U.S. News & World Report and Best Lawyers<sup>®</sup>
- Named one of the “Best Places to work in Pennsylvania” since 2006



Super Lawyers

The business marketplace has never been more competitive. To achieve your goals, you need innovative yet practical solutions, delivered in a cost-efficient manner. The attorneys of the McNees Corporate & Tax Group answer that need.

To provide the services you need, the group is focused both by practice area and by industry.

### Our wide range of corporate practice areas includes:

- Business formation and choice of entity
- Commercial financing
- Real estate acquisition and sale
- Contract preparation, analysis and negotiation
- Corporate governance
- Dissolution, liquidation and restructuring
- Document management and retention
- Due diligence
- Executive compensation
- Family business matters
- Franchises
- International business transactions
- Joint ventures
- Leases
- Mergers, acquisitions and divestitures
- Multistate business transactions
- Nonprofit and charitable organizations
- Pass-through entities
- Private placements and private equity transactions
- Public-private and public-public partnerships
- Regulatory guidance
- Risk management
- Sales and distribution
- Securities, both state and federal
- Succession planning
- Tax planning and controversies
- Venture capital and emerging companies

### Our attorneys have broad experience in many industries, including:

- Agriculture
- Automotive dealerships
- Banking
- Construction
- Craft breweries and distilleries
- Education
- Equine industry, including racehorse owner and racetrack representation;
- Foundations and trade associations
- Food and beverage
- Healthcare
- Housing
- Insurance coverage
- Life sciences
- Manufacturing
- Oil and natural gas
- Professional services
- Public sector authority law
- Retail
- Technology licensing
- Telecommunications
- Transportation, distribution & logistics

The Corporate & Tax Group also seamlessly coordinates with other groups in the firm to provide ancillary services such as litigation, real estate, intellectual property, labor and employment, administrative regulations, and estate planning.

The Corporate & Tax Group is an extensive and talented team. Please visit our website, [www.mcneeslaw.com](http://www.mcneeslaw.com), for more information on the focuses of individual group members. We are confident that our team can help you achieve your business goals.

## McNees Corporate & Tax Group



**TIMOTHY M. FINNERTY, CPA**  
CO-CHAIR  
717.237.5394  
tfinnerty@mcneeslaw.com



**NICOLE S. KAYLOR**  
CO-CHAIR  
717.237.5416  
nkaylor@mcneeslaw.com



**VANCE E. ANTONACCI**  
717.581.3701  
vantonacci@mcneeslaw.com



**TIMOTHY J. HORSTMANN**  
717.237.5462  
thorstmann@mcneeslaw.com



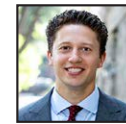
**J. COREY REEDER**  
814.867.8500  
creeder@mcneeslaw.com



**JOSHUA D. COHEN**  
717.581.3719  
jcohen@mcneeslaw.com



**MICHAEL L. HUND**  
717.237.5483  
mhund@mcneeslaw.com



**ANDREW S. RUSNIAK**  
717.581.3704  
arusniak@mcneeslaw.com



**JULIA P. COELHO**  
717.237.5240  
jcoelho@mcneeslaw.com



**PETER "FRITZ" KRIETE**  
717.237.5486  
fkriete@mcneeslaw.com



**ALEXANDRA SNELL**  
717.237.5380  
asnell@mcneeslaw.com



**KIMBERLY M. COLONNA**  
717.237.5278  
kcolonna@mcneeslaw.com



**JACQUELYN KUNKLE**  
717.237.5215  
jkunkle@mcneeslaw.com



**DIANE M. TOKARSKY**  
717.237.5354  
dtokarsky@mcneeslaw.com



**BARBARA A. DARKES**  
717.237.5381  
bdarkes@mcneeslaw.com



**JAMES W. KUTZ**  
717.237.5441  
jkutz@mcneeslaw.com



**MARK M. VAN BLARGAN**  
717.237.5347  
mvanblargan@mcneeslaw.com



**LOUIS A. DEJOIE**  
717.237.5387  
ldejoie@mcneeslaw.com



**AMY CAPOBIANCO MARSAR**  
717.237.5415  
acapobianco@mcneeslaw.com



**BRADLEY A. WALKER**  
717.237.5282  
bwalker@mcneeslaw.com



**FRANK T. DONAGHUE**  
717.237.5408  
fdonaghue@mcneeslaw.com



**MEERA R. MODI**  
717.780.7886  
mmodi@mcneeslaw.com



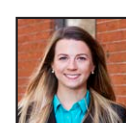
**BENJAMIN WARD**  
717.237.5461  
bward@mcneeslaw.com



**SHAUN R. EISENHAUER**  
717.237.5257  
seisenhauer@mcneeslaw.com



**STEPHEN A. MOORE**  
717.237.5307  
smoore@mcneeslaw.com



**AMBRIA ARMSTRONG WESSEL**  
717.581.2319  
awessel@mcneeslaw.com



**STEPHEN C. GIERASCH**  
717.780.7828  
sgierasch@mcneeslaw.com



**JAMES K. NOEL, IV**  
717.581.3709  
jnoel@mcneeslaw.com



**CATHERINE E. WRIGHT, PARALEGAL**  
717.237.5294  
cwright@mcneeslaw.com



**BENJAMIN A. HAVERSTICK**  
717.581.3715  
bhaverstick@mcneeslaw.com



**DAVID A. NOLL**  
717.237.5453  
dnoll@mcneeslaw.com