

**Harrisburg, PA**

100 Pine Street • PO Box 1166  
Harrisburg, PA 17108-1166  
Tel: 717.232.8000

**Lancaster, PA**

570 Lausch Lane • Suite 200  
Lancaster, PA 17601-3057  
Tel: 717.291.1177

**Scranton, PA**

125 North Washington Ave. • Suite 220  
Scranton, PA 18503  
Tel: 570.209.7220

**State College, PA**

330 Innovation Boulevard • Suite 101  
State College, PA 16803  
Tel: 814.867.8500

**York, PA**

316 N. George Street  
York, PA 17401  
Tel: 717.714.6400

**Frederick, MD**

5283 Corporate Drive • Suite 104  
Frederick, MD 21703  
Tel: 301.241.2030

**Columbus, OH**

21 East State Street • 17th Floor  
Columbus, OH 43215-4228  
Tel: 614.469.8000

**Washington, DC**

1200 G Street, NW • Suite 800  
Washington, DC 20005  
Tel: 202.898.5700



**The McNees Real Estate Law Group**



[www.McNeesLaw.com](http://www.McNeesLaw.com)





# Real Estate Law

The Real Estate Law Practice Group at McNees Wallace & Nurick delivers sophisticated legal advice to a broad range of clients in virtually all areas of law relating to commercial real estate.

Our clients include residential and commercial real estate developers, investors, and lenders; buyers and sellers of real estate; businesses and non-profit entities, such as colleges and universities, with significant real estate components; and commercial lessors and lessees.

Our experienced real estate lawyers, paralegals, and non-legal professionals, including a land use planner, assist and advise our clients on a broad range of projects, including:

- Commercial real estate development such as shopping centers, freestanding retail stores, restaurants, theaters, office buildings, warehouses, and other industrial projects.
- Wireless telecommunications leases.
- Acquisition and disposition of commercial real estate.
- Coordinating real estate transfers within corporate mergers and acquisitions.
- Commercial leasing, including retail, office, industrial, and mixed-use properties.
- Commercial, residential, and mixed-use condominium and planned community developments, including age-restricted communities, traditional neighborhood developments, and communities involving master associations, as well as shopping center and office condominiums.
- Real estate financing, including commercial mortgages, private debt, sale-leaseback, leasehold financing, and real estate issues that may impact the collateral in a financing transaction.
- Storm water management and transportation matters that arise during the land development approval process.
- Land use analysis and approval, including approval of subdivision and land development plans, and obtaining all forms of zoning relief, including variances, special exceptions, and conditional uses.
- Amendments and challenges to land use ordinances.
- Real estate litigation and alternative dispute resolution, including controversies involving zoning and land development issues, lease disputes, and title challenges.
- Land use issues in eminent domain matters, including challenges to condemnations and determinations of just compensation.
- Local regulations of land use in natural gas development and the energy industry.
- Oil and gas title opinions and issues.
- Sales and leases of mineral rights.
- Real estate tax assessment appeals for commercial and investment property owners.
- Real estate brokerage law.

Our goal is to help our clients achieve their objectives at all stages of their real estate transactions through practical, efficient, and timely representation.

Group members are frequent speakers, writers, and educational presenters on a variety of real property law issues.

## The McNees Real Estate Group



**JONATHAN D. ANDREWS, CHAIR**  
717.237.5358  
jandrews@mcneeslaw.com



**CHARLES M. COURTNEY**  
717.237.5296  
ccourtney@mcneeslaw.com



**SHAUN R. EISENHAUER**  
717.237.5257  
seisenhauer@mcneeslaw.com



**DAVID J. EVENHUIS**  
717.237.5421  
devenhuis@mcneeslaw.com



**HELEN L. GEMMILL**  
717.237.5273  
hgemmill@mcneeslaw.com



**PETER J. HALDEMAN**  
717.237.5475  
phaldeman@mcneeslaw.com



**CAROL VERISH HOUCK**  
717.237.5325  
chouck@mcneeslaw.com



**MARIA KENNISON**  
717.237.5336  
mkennison@mcneeslaw.com



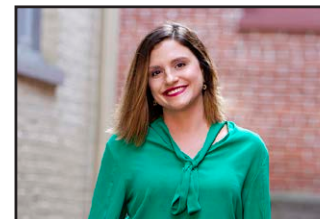
**GIUSEPPINA G. MCCARTHY**  
717.237.5360  
gmccarthy@mcneeslaw.com



**JEFFREY ESCH MCCOMBIE**  
717.237.5310  
jmccombie@mcneeslaw.com



**J. COREY REEDER**  
814.867.8500  
creeder@mcneeslaw.com



**CLAUDIA N. SHANK**  
717.581.3730  
cshank@mcneeslaw.com



**STEPHANIE J. SPRENKLE**  
717.237.5327  
ssprenkle@mcneeslaw.com



**MARK STANLEY**  
717.581.2315  
mstanley@mcneeslaw.com



**JAMES M. STRONG**  
717.237.5200  
jstrong@mcneeslaw.com



**RHONDA M. WEAVER**  
717.237.5434  
rweaver@mcneeslaw.com



**PETER WERTZ**  
717.581.2314  
pwertz@mcneeslaw.com



**CHRIS J. KNARR, AICP, BCO, CZO**  
SPECIALIST  
717.237.5301  
cknarr@mcneeslaw.com



**ANNE E. STANKO, PARALEGAL**  
717.237.5301  
astanko@mcneeslaw.com

